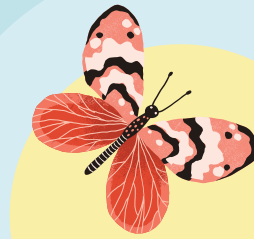
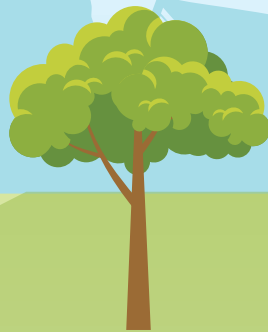


Wild About Colchester



BIG 5 SAFARI SHEET 3

COLNE LOCAL NATURE RESERVE | SENSORY GARDEN

We are asking you to help us find some of the more unusual and harder to spot wildlife around Colchester. We know we have these animals and plants at different sites, but sometimes we have not seen them for a while, and there are even some we are not sure are still there. Other plants or animals on our Big Five for the sites are iconic must sees!

We are asking you to help us find some of the more unusual and harder to spot wildlife around Colchester. We know we have these animals and plants at different sites, but sometimes we have not seen them for a while, and there are even some we are not sure are still there. Other plants or animals on our big five for the sites are iconic must sees!

Wild about Colchester is not just for children.

Challenge your ID skills and help our ranger team to locate some of the red list and harder to spot species on different reserves around Colchester

Big five safari sheet

A wildlife challenge for adults - Help the rangers find some of the more unusual and harder to spot wildlife around Colchester. - a big five safari for different countryside and park sites!

So, if you fancy a wildlife challenge see if you can undertake the Big Five safaris on different sites around Colchester. This week why not try:

Colne Local Nature Reserve

This nature reserve is off Rosabelle Ave. Postcode CO7 9NZ. Parking may be available. More info at colchester.gov.uk/parks



Sweet Chestnut



Common Lizard



Oyster Catcher



Red Shank



Sea Lavender



Please plan your journey to these different sites. More information about opening times and car parks at visitcolchester.com

REMEMBER TO...

- **Take care** you are responsible for the safety of yourself and your party
- **Respect COVID-19** social distancing and group gathering guidelines
- **Respect** any ancient monument and remember to put your rubbish in a bin or take it home with you
- **Recycle** this sheet if you printed it out at home.

To keep up to date with the latest Wild About Colchester activities follow us

@EnjoyColchester YourColchester @BetterColchester



Big five safari sheet

A wildlife challenge for adults - Help the rangers find some of the more unusual and harder to spot wildlife around Colchester. - a big five safari for different countryside and park sites!

Located in Castle Park on the lawn behind the Hollytrees museum, the Sensory Garden is quiet, reflective space that is home to an array of winged animals. Why not try to spot the following species?

Sensory Garden

Castle Park is located off the High Street in the town centre. The nearest car park is PrioryStreet: colchester.gov.uk/parking.
Postcode for Castle Park is CO1 1UG

Ringlet
Butterfly



Peacock
Butterfly



Pied Wagtail



Meadow Brown
Butterfly






Buff-tailed
bumblebee



REMEMBER TO...

- **Take care** you are responsible for the safety of yourself and your party
- **Respect COVID-19** social distancing and group gathering guidelines
- **Respect** any ancient monument and remember to put your rubbish in a bin or take it home with you
- **Recycle** this sheet if you printed it out at home.

To keep up to date with the latest Wild About Colchester activities follow us

 @EnjoyColchester  YourColchester  @BetterColchester

